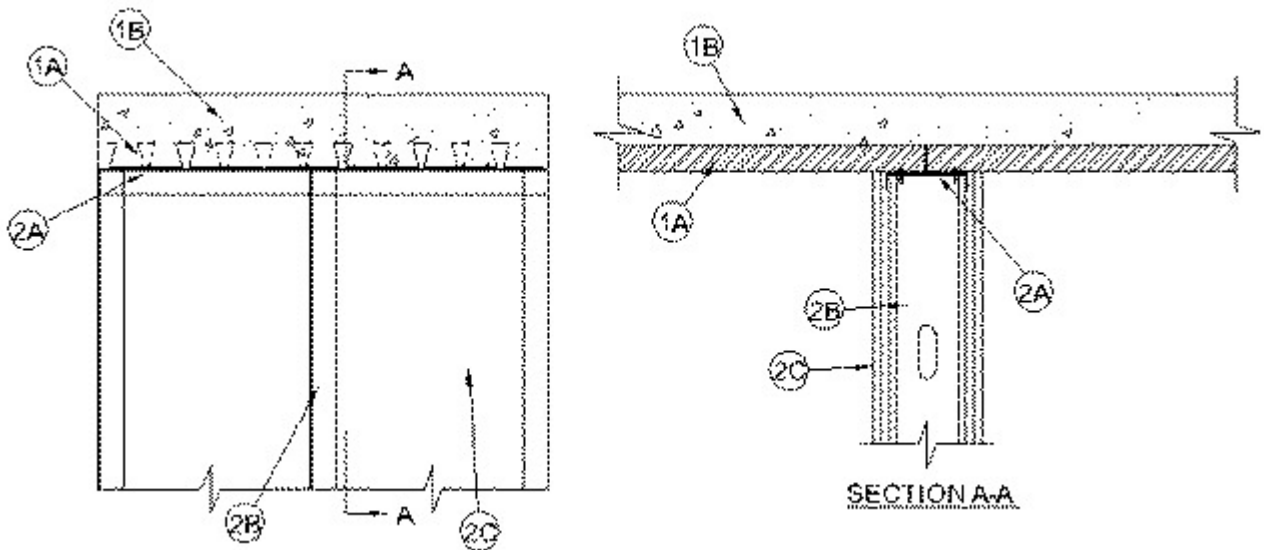


Joint Systems

System No. HW-S-0062

July 21, 2005

Assembly Rating — 2 Hr



1. Floor Assembly — The fire-rated fluted steel deck/concrete floor assembly shall be constructed of the materials and in the manner described in D900 Series Floor-Ceiling Design in the UL Fire Resistance Directory and shall include the following construction features:

A. Steel Floor And Floor Units* — Max 2 in. deep galv steel fluted floor units. At butted ends, crest (top flute) shall be offset

3-1/16 in. from the valley (bottom flute) of steel deck. To prevent the leakage of concrete during installation, nom 2 in. high by 1 in. wide by 0.034 in. thick enclosure angles (supplied in conjunction with the steel floor units) installed between butted seams of the steel fluted floor units. Nom 1 in. horizontal leg of enclosure angle secured to top of crest of fluted deck by means of No. 10 by 3/4 in. long steel screws spaced 24 in. OC. As an alternate to the steel enclosure angles, vinyl adhesive tape or equivalent may be used to seal the voids between the butted joints of steel floor units.

CONSOLIDATED SYSTEMS INC —
Versa-Dek® S, LS and XLS.

B. Concrete — Min 2-1/2 in. thick reinforced concrete, as measured from the top plane of the floor units.

2. Wall Assembly — The 2 hr fire-rated gypsum board/steel stud wall assembly shall be constructed of the materials and in the manner described in the individual U400 or V400 Series Wall or Partition Design in the UL Fire Resistance Directory and shall include the following construction features:

A. Steel Floor And Ceiling Runners — Floor and ceiling runners of wall assembly shall consist of min No. 20 gauge galv steel channels sized to accommodate steel studs (Item 2B). Ceiling runner to be provided with min 2 in. flanges. Ceiling runner installed perpendicular to the direction of the fluted of steel floor units and centered beneath the offset butted joints of the steel deck. Ceiling runner secured to valleys (bottom flutes) of steel floor units with steel screws or by welds spaced max 12 in. OC. Steel screws to be offset 2 in. from butted joints of steel floor units.

B. Studs — Steel studs to be No. 20 gauge galv steel, min 3-5/8 in. wide. Studs screw attached to floor and ceiling runners on both sides of studs.

C. Gypsum Board* — Gypsum board sheets installed to a min total 1-1/4 in. thickness on each side of wall. Gypsum board butted tight to bottom surface of steel floor units.

*Bearing the UL Classification Mark

[Last Updated](#) on 2005-07-21

This page and all contents are Copyright © 2005 by Underwriters Laboratories Inc.®

The appearance of a company's name or product in this database does not in itself assure that products so identified have been manufactured under UL's Follow-Up Service. Only those products bearing the UL Mark should be considered to be Listed and covered under UL's Follow-Up Service. Always look for the Mark on the product.

UL permits the reproduction of the material contained in the Online Certification Directory subject to the following conditions: 1. The Guide Information, Designs and/or Listings (files) must be presented in their entirety and in a non-misleading manner, without any manipulation of the data (or drawings). 2. The statement "Reprinted from the Online Certifications Directory with permission from Underwriters Laboratories Inc." must appear adjacent to the extracted material. In addition, the reprinted material must include a copyright notice in the following format: "Copyright © 2005 Underwriters Laboratories Inc.®"

An independent organization working for a safer world with integrity, precision and knowledge.

