

Design No. D927
December 10, 2001

Restrained Assembly Ratings — 3/4, 1, 1-1/2, 2 & 3 Hr

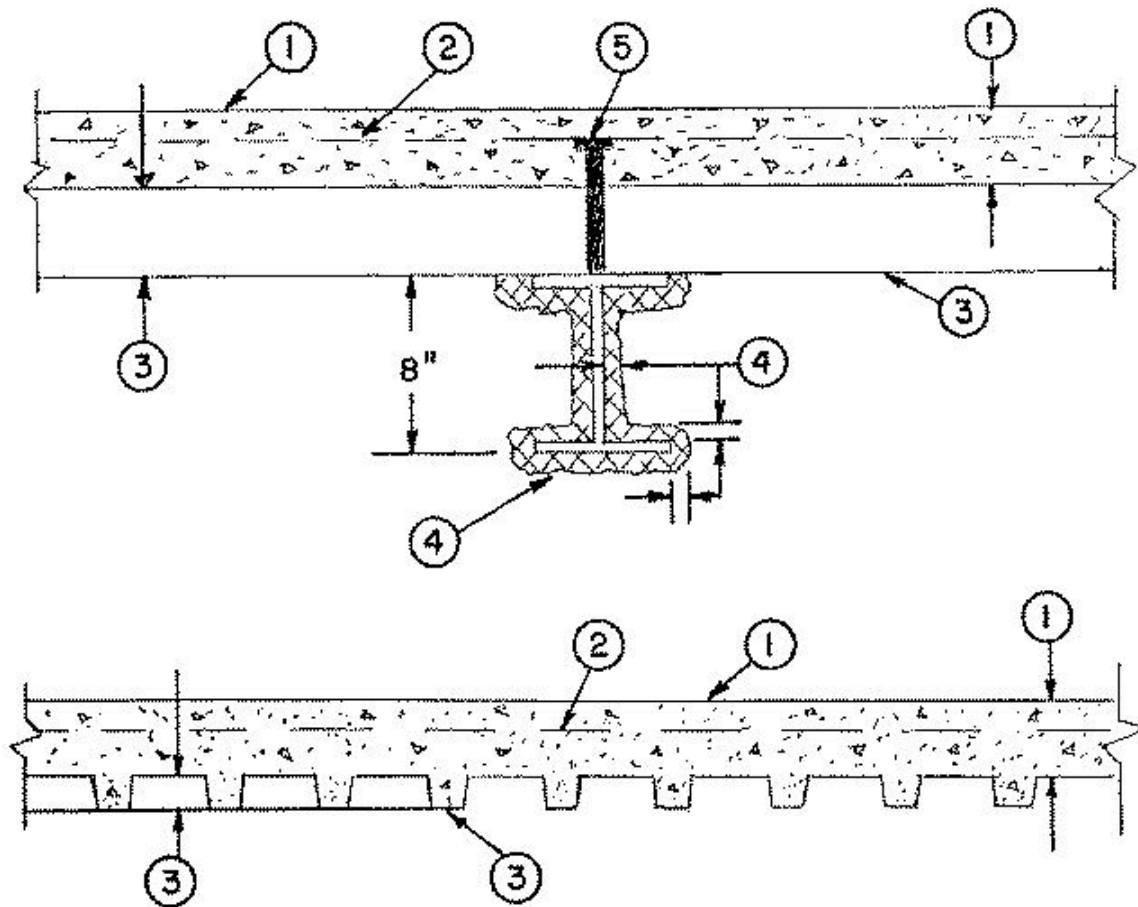
(See Items 1, 6, 7, 8 & 11)

Unrestrained Assembly Ratings — 0 Hr

(See Item 3)

Unrestrained Beam Ratings — 1, 1-1/2, 2 & 3 Hr

(See Items 4, 4A, 7 & 11)



Supports — W8x28 min size steel beams. Or steel joists or joist girders (not shown), composite or noncomposite. Welded or bolted to end supports. Designed per S.J.I. specifications for a max tensile stress of 30 ksi. May be either uncoated or provided with a shop coat of paint. For the 2 h or less Restrained or Unrestrained Beam Ratings, top and bottom chords shall each consist of two angles with a min total area of 0.96 and 0.77 sq in., respectively. Web members shall be either round bars or angles. Min area of the end diagonal web shall be 0.444 sq in. Min area of each of the first six interior diagonal webs shall be 0.406 sq in. All other interior webs shall have a min area of 0.196 sq in. For the 3 h Restrained or Unrestrained Beam Ratings, each of the top and bottom chords shall each consist of two angles with a min total area of 1.74 sq in. Web members shall be either round bars or angles. Min area of each of the first five end diagonal webs shall be 0.886 sq in. All other interior webs shall have a min area of 0.441 sq in. Bridging per S.J.I. specifications is required when noncomposite joists are used. For noncomposite joists, steel filler pieces of proper size, 1 to 2 in. long shall be welded to and between the top chord angles at midway between all top chord panel points.

1. **Normal Weight or Lightweight Concrete** — Normal weight concrete carbonate or siliceous aggregate, 3500 psi compressive strength, vibrated. Lightweight concrete, expanded shale, or slate aggregate by rotary-kiln method, or expanded clay aggregate by rotary-kiln or sintered-grate method, 3000 psi compressive strength, vibrated, 4 to 7 percent entrained air.

Restrained Assembly Rating Hr	Concrete (Type)	Concrete Unit Weight pcf	Concrete Thkns In.
1	Normal Weight	147-153	3-1/2
1-1/2	Normal Weight	147-153	4
2	Normal Weight	147-153	4-1/2
3	Normal Weight	147-153	5-1/4
3/4 or 1 (See Item 6)	Lightweight	107-113	2-1/2
1	Lightweight	107-120	2-5/8
1-1/2	Lightweight	107-113	3
2	Lightweight	107-113	3-1/4
2	Lightweight	107-116	3-1/4*
2	Lightweight	114-120	3-1/2
3	Lightweight	107-113	4-3/16
3	Lightweight	114-120	4-7/16

*For use with 2 or 3 in. steel floor and form units only.

2. **Welded Wire Fabric** — 6 x 6, 10 x 10 SWG.

3. **Steel Floor and Form Units*** — Composite 1-1/2, 2 or 3 in. deep galv units. Fluted units may be uncoated or phosphatized/painted. Min gauges are 22 MSG for fluted and 20/20 MSG for cellular units. The following combinations of units may be used:

(1) all 24 or 36 in. wide cellular.

(2) all fluted.

(3) one or two 3 in. deep, 12 in. wide, 18/18 MSG min cellular units, alternating with 3 in. deep fluted or other cellular.

(4) any blend of fluted and 24 or 36 in. wide cellular.

(5) 3 in. deep, 30 in. wide cellular with 8-1/8 in. wide valley along side joints may be used when 3/8 in. diam reinforcing bars are placed 1-1/2 in. to each side of side joints and 1 in. above bottom of unit.

CONSOLIDATED SYSTEMS INC — 24 or 36 in. wide Types CFD-2, CFD-3; 24, 30 or 36 in. wide Type CFD-1.5; 24 in. wide Type NC; 24 in. wide Type Versa-Dek® S, LS, XLS. Units may be phos/ptd.

Spacing of welds attaching units to supports shall be 12 in. OC for 24, and 36 in. wide units, four welds per sheet for 30 in. wide units. Unless noted otherwise, adjacent units button-punched or welded together 36 in. OC along side joints. For **3 Hr. Rating**, units with overlapping type side joints welded together 24 in. OC max.

The Unrestrained Assembly Rating is 1-1/2 Hr. for the following units and limitations:

- (a) 1-1/2 in. deep, 24 in. wide, 22 MSG or thicker fluted with clear spans not more than 7 ft 8 in.
- (b) 1-1/2 in. deep, 24 in. wide, 20 MSG or thicker fluted with clear spans not more than 8 ft 8 in.
- (c) 1-1/2 in. deep, 24 in. wide, 16 MSG or thicker fluted and 18/18 MSG or thicker cellular with clear spans not more than 9 ft 11 in.
- (d) 3 in. deep, 36 in. wide, 18 MSG or thicker fluted and 24 in. wide, 20/18 MSG or thicker cellular with clear spans not more than 13 ft 2 in.

4. **Spray-Applied Fire Resistive Materials*** — Applied by mixing with water and spraying in one or more coats to a final thickness as shown in the tables below, in the tables below to steel beam surfaces which must be clean and free of dirt, loose scale and oil. Min avg and min ind density of 15/14 pcf respectively for the Type 15, and 15 High Yield 22/18 pcf, respectively for the Type 22, 40/37 respectively for the Type 40, 28/25 respectively for the Type 239, 44.5/42 respectively for the Type 240-High Yield and 55/50 respectively for the Type 241. For method of density determination, refer to Design Information Section.

Restrained Assembly Rating Hr	Unrestrained Assembly Rating Hr	Unrestrained Beam Rating Hr	Spray Applied Fire Resistive Mtl Thkns on Beam In.
1	1	1	1/2
1-1/2	1-1/2	1-1/2	13/16
2	1	1	1/2
2	2	2	1-1/16
3	1-1/2	1-1/2	13/16
3	3	3	1-9/16

The thicknesses of Spray-Applied Fire Resistive Materials shown in the table below are applicable when the thickness applied to the beams' lower flange edges is reduced by 1/2 that shown in the table:

Restrained Assembly Rating Hr	Unrestrained Assembly Rating Hr	Unrestrained Beam Rating Hr	Spray Applied Fire Resistive Mtl Thkns on Beam In.
1	1	1	9/16
1-1/2	1-1/2	1-1/2	7/8
2	1	1	9/16
2	2	2	1-3/16
3	1-1/2	1-1/2	7/8
3	3	3	1-3/4

The thicknesses of Spray-Applied Fire Resistive Materials shown in the table below are applicable when the thickness applied to the beams' lower flange edges is reduced by 1/2 that shown in the table and the beams are supporting all fluted floor or form units:

Restrained Assembly Rating Hr	Unrestrained Assembly Rating Hr	Unrestrained Beam Rating Hr	Spray Applied Fire Resistive Mtl Thkns on Beam In.
1	1	1	7/16+
1-1/2	1-1/2	1-1/2	3/4
2	1	1	7/16+
2	2	2	1
3	1-1/2	1-1/2	3/4
3	3	3	1-9/16

+Thickness applied to beams' lower flange edge to be 1/4 in. min.

The thickness of material required on the steel joist for the various Ratings are shown in the following table:

Restrained Assembly Rating Hr	Unrestrained Beam Rating Hr	Type of Concrete Slab	Spray Applied Fire Resistive Mtl Thkns In. Joist & Bridging
1	1	NW or LW	1-1/8
1-1/2	1-1/2	NW or LW	1-3/4
2	2	NW or LW	2-1/4
3	3	NW or LW	2-7/8

CARBOLINE CO — Types 15, 15-High Yield, 22, 40, 239, 240-High Yield, 241.

CARBOLINE KOREA LTD — Types 15, 15-High Yield, 22, 40, 239, 240-High Yield, 241.

STONCOR MIDDLE EAST L L C — Types 15, 15-High Yield , 22, 40, 239, 240-High Yield, 241.

CARBOLINE SOUTHEAST ASIA PTE LTD — Types 15, 15-High Yield , 22, 40, 239, 240-High Yield, 241.

CDC CARBOLINE (INDIA) PVT LTD — Types 15, 15-High Yield , 22, 40, 239, 240-High Yield, 241 , CDC Crete 15, CDC Crete 15-HY, CDC Crete 22, CDC Crete 40, CDC Crete 239, CDC Crete 240 High Yield, CDC Crete 241.

CENTRAL PAINTS IND INC LTD — Types 15, 15-High Yield , 22, 40, 239, 240-High Yield, 241.

5. **Shear-Connector Studs — Optional** — Studs 3/4 in. diam by 3 in. long, for 1-1/2 in. deep form units to 5-1/4 in. long for 3 in. deep form units, headed type or equivalent per AISC specifications. Welded to the top flange of the beam through the steel form units.

6. **Electrical Inserts** — (Not shown) Classified as "**Outlet Boxes and Fittings Classified for Fire Resistance.**"

(1) **Robertson, H. H.** — Preset Inserts.

For use with 2-1/2 in. lightweight concrete topping over QL-WKX steel floor units. Installed over factory-punched holes in floor units per accompanying installation instructions.

Spacing shall not be more than one insert in each 14 sq ft. of floor area with spacing along floor units not less than 48 in. OC. The holes cut in insert cover for passage of wires shall be no more than 1/8 in. larger diam. than wire. Restrained Assembly Rating is 3/4 hr with Tapmate II-FS-1 and 1 hr with Tapmate II-FS-2 inserts.

H H ROBERTSON — Tapmate II-FS-1, II-FS-2; Series KEB.

(2) **Walker Systems Inc.** — After set Inserts.

Single-service after set inserts installed per accompanying installation instructions in 2-1/2 in. diam hole core-drilled through min 3-1/4 in. thick concrete topping to top of cell of any min 3 in. deep cellular steel floor unit specified under Item 3. Spacing shall be no more than one insert in each 10 sq ft of floor area in each span with a min center to center spacing of 16 in. If the high potential and low potential raceways of the cellular steel floor unit are separated by a valley filled with concrete, the center to center spacing of the high potential and low potential single-service after set inserts may be reduced to a min of 7-1/2 in. Restrained Assembly Rating is 2 hr or less with internally protected type 436 after set insert with Type M4-, M6- or M8- Series single-service activation fitting.

WALKER SYSTEMS INC — Internally protected Type 436 after set insert with Type M4-, M6- or M8- Series single-service activation fitting.

7. **Mineral and Fiber Boards*** — (Optional, not shown). Applied over concrete floor with no restriction on board thickness. When mineral and fiber boards are used, the unrestrained beam rating shall be increased by a minimum of 1/2 hr.

See **Mineral and Fiber Board** (CERZ) category for names of manufacturers.

8. **Roof Covering Materials*** — (Optional, not shown) Consisting of materials compatible with insulations described herein which provide Class A, B or C coverings. See Built-Up Roof Covering Materials in Building Materials Directory.

9. **Insulating Concrete** — (not shown) Optional. Various types of insulating concrete prepared and applied in the thickness indicated:

A. **Vermiculite Concrete** — (not shown) Optional.

1. Blend 6 to 8 cu ft of Vermiculite Aggregate* to 94 lb. Portland Cement and air entraining agent. Min thickness of 2 in. as measured to the top surface of the structural concrete or foamed plastic (Item 10) when it is used.

ELASTIZELL CORP OF AMERICA

SIPLAST INC

VERMICULITE PRODUCTS INC

2. Blend 3.5 cu ft of Type NVC Concrete Aggregate* or Type NVS Vermiculite Aggregate* to 94 lb Portland Cement. Slurry coat, 1/8 in. thickness beneath foamed plastic (Item 10) when used, 1 in. min topping thickness.

SIPLAST INC

VERMICULITE PRODUCTS INC

Vermiculite concrete may be covered with Roof Covering Materials (Item 8).

B. Cellular Concrete — Roof Topping Mixture* — concentrate mixed with water and Portland cement per manufacturers specifications. Cast dry density and 28— day min. compressive strength of 190 psi as determined with ASTM C495— 66.

CELCORE INC — Cast dry density of 31 (+ or -) 3.0 pcf.

CELLUFOAM CONCRETE SYSTEMS, DIV OF CELLUFOAM CONCRETE OF — Cast dry density of 30 (+ or - 3.0) pcf.

ELASTIZELL CORP OF AMERICA — Type II. Mix #1 of cast dry density 39 (+ or -) 3.0 pcf, Mix #2 of cast dry density 40 (+ or -) 3.0 pcf, Mix #3 of cast dry density 47 (+ or -) 3.0 pcf.

LITE-CRETE INC — Cast dry density of 29 (+ or -) 3.0 pcf.

C. Cellular Concrete-Roof Topping Mixture* — Concentrate mixed with water and Portland cement per manufacturers specifications. 28-day min. compressive strength of 190 psi as determined with ASTM C495-66.

SIPLAST INC — Mix No. 1 or 2. Cast dry density of 32+3 (Mix No. 1) or 36+3 (Mix No. 2) pcf.

D. Perlite Concrete — 6 cu ft. of Perlite Aggregate* to 94 lb of Portland Cement and 1-1/2 pt air entraining agent. Min. thickness 2 in. as measured to the top surface of structural concrete or foamed plastic (Item 10A) when it is used.

See Perlite Aggregate (CFFX) in Fire Resistance Directory for names of manufacturers.

E. Cellular Concrete — Roof Topping Mixture* — Foam Concentrate mixed with water, Portland Cement and UL Classified Vermiculite Aggregate per manufacturer's application instructions. Cast dry density of 33 (+ or -) 3.0 pcf and 28-day compressive strength of min 250 psi as determined in accordance with ASTM C495-86.

SIPLAST INC — Mix No. 3.

F. Floor Topping Mixture* — (Optional, not shown) — Approx 4.5 gal of water to 41 lbs of NVS Premix floor topping mixture. Slurry coat 1/8 in. thickness beneath foamed plastic (Item 11) when used, 1 in. min topping thickness.

SIPLAST INC — Floor Topping Mixture may be covered with Built-Up or Single Membrane Roof Covering.

10. Foamed Plastic* — (optional — Not Shown) For use only with vermiculite (Item 9A) or cellular (Item 9C) concretes or Floor Topping Mixture (Item 9F) — Rigid polystyrene foamed plastic insulation having slots and/or holes sandwiched between vermiculite concrete slurry which is applied to the normal or lightweight concrete surface and vermiculite concrete topping (Item 9A). Max. Thickness to be 8 in.

SIPLAST INC

VERMICULITE PRODUCTS INC

10A. Foamed Plastic* — For use only with cellular concrete. Nominal 24 by 48 by max. 8 in. thick polystyrene foamed plastic insulation boards having a density of 1.0 + 0.1 pcf encapsulated within cellular concrete topping (Item 98). Each insulation board shall contain six nominal 3 in. diameter holes oriented in two rows of three holes each with the holes spaced 12 in. OC, transversely and 16 in. OC longitudinally.

See Foamed Plastic* (BRYX) category in Building Materials Directory or Foamed Plastic* (CCVW) category in Fire Resistance Directory for list of manufacturers.

11. **Foamed Plastic*** — (Optional, not shown). Polyisocyanurate roof insulation, applied over concrete floor with no restriction on insulation thickness. When polyisocyanurate insulation is used, the unrestrained beam rating shall be increased by a minimum of 1/2 hr.

See Foamed Plastic (CCVW) category for list of manufacturers.

*Bearing the UL Classification Mark

Reprinted from the Online Certifications Directory with permission from Underwriters Laboratories Inc.

Copyright © 2005 Underwriters Laboratories Inc.®