

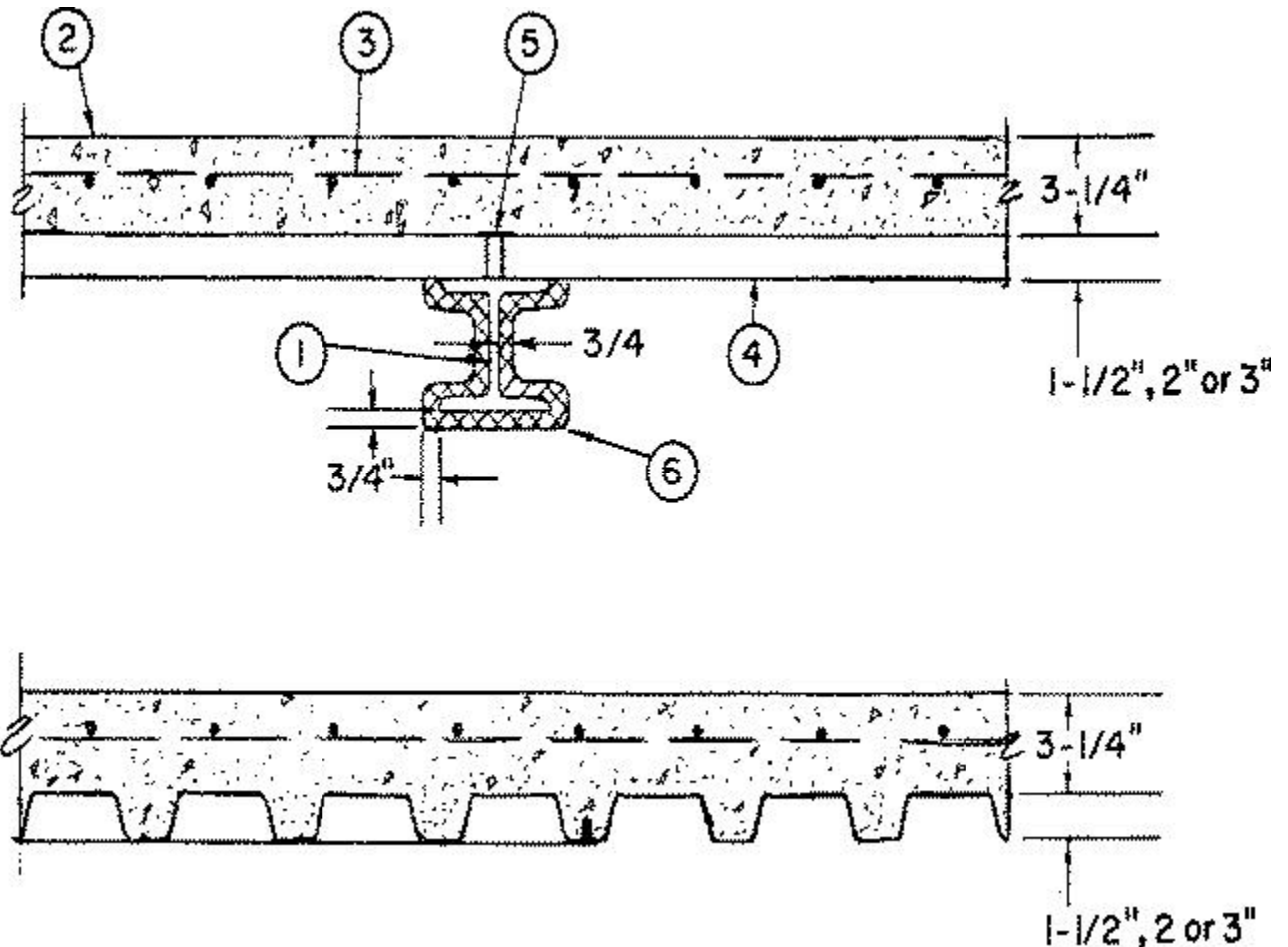
Design No. D913

April 25, 2002

Restrained Assembly Rating — 2 Hr.

Unrestrained Assembly Rating — 0 Hr. (See Item 4)

Unrestrained Beam Rating — 1 Hr.



1. **Beam** — W8x17, min size.

2. **Lightweight Concrete** — Expanded shale or slate aggregate by rotary-kiln method or expanded clay aggregate by rotary-kiln or sintered-grate method, 102 pcf unit weight, 2000 psi compressive strength, vibrated, 4 to 7 percent entrained air.

3. **Welded Wire Fabric** — 6x6 — W1.4xW1.4.

4. **Steel Floor and Form Units*** — Composite 1-1/2, 2, or 3 in. deep galv fluted or cellular units, min gauges are 22 MSG for fluted and 20/20 MSG for cellular. Fluted units may be phos/ptd. The following combination of units may be used: (1) All fluted; (2) All cellular; (3) Any blend of fluted and cellular. Welded to supports 12 in. OC max. Adjacent units button-punched or welded together 36 in. OC along side joints.

CONSOLIDATED SYSTEMS INC — 24 or 36 in. wide Types CFD-2, CFD-3; 24, 30 or 36 in. wide Type CFD-1.5. Units may be phos/ptd.

The Unrestrained Assembly Rating is 1 Hr. — For unit clear spans of 9 ft 6 in. or less and minimum unit thickness of No. 18 MSG.

Alternate Construction — Noncomposite units of the same type listed above may be used provided allowable loading is calculated on the basis of **noncomposite** design.

5. **Joint-Cover** — 2 in. wide pressure-sensitive adhesive cloth tape.

6A. **Spray-Applied Fire Resistive Materials*** — Applied by spraying with water, in one or more coats, to a final tamped or untamped thickness shown on sketch. Steel surfaces must be free of dirt, oil, or scale. Tamping is optional. Use of adhesive or surface sealer is optional. Minimum average tamped or untamped density is 12 pcf, minimum individual tamped or untamped density is 11 pcf for Types II or DC/F. Min avg and min ind densities of 22 and 19 pcf, respectively, for Type HP. For method of density determination refer to Design Information Section.

ISOLATEK INTERNATIONAL — Type D-C/F, HP or Type II, Type EBS or Type X adhesive/sealer.

7. **Shear Connector Studs — Optional** — (Not Shown) — Studs, 3/4 in. diam, by 3 to 3 in. long for 1-1/2 in. deep form units to 5-1/4 in. long for 3 in. units, headed type or equivalent per AISC specifications. Welded to top flange of beam through form units.

*Bearing the UL Classification Mark

Reprinted from the Online Certifications Directory with permission from Underwriters Laboratories Inc.

Copyright © 2005 Underwriters Laboratories Inc.®