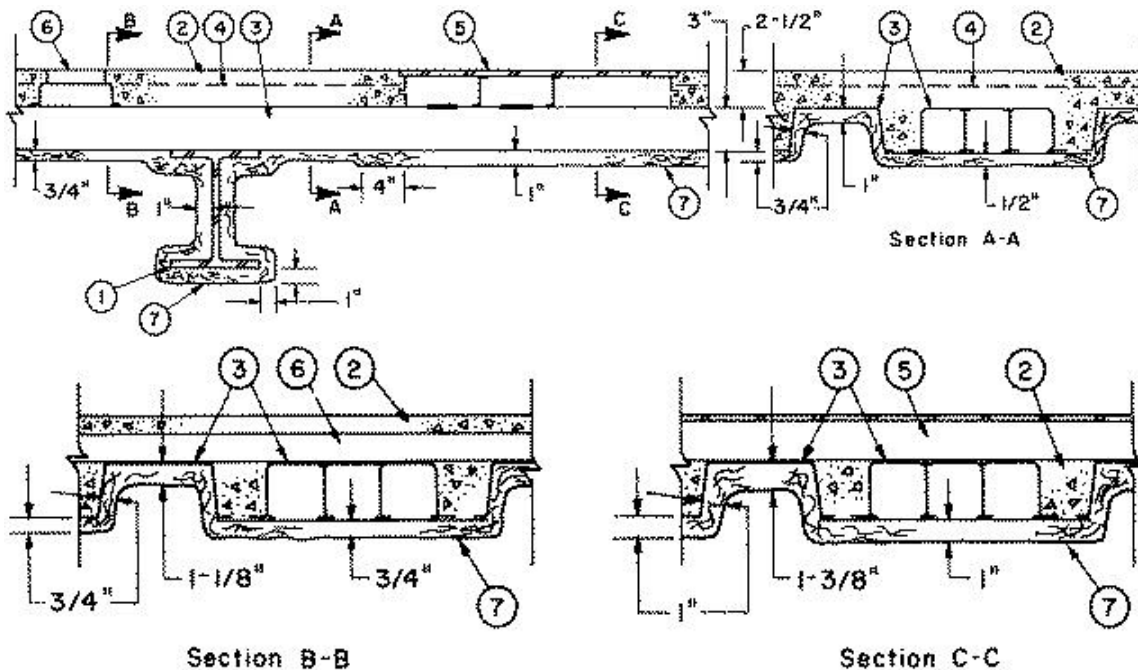


Restrained Assembly Rating — 3 Hr.

Unrestrained Assembly Rating — 1-1/2 Hr.

Unrestrained Beam Rating — 1-1/2 Hr.



1. **Beam** — W8X17, min. size.

2. **Normal-Weight Concrete** — Carbonate aggregate, 145+3 or -3 pcf unit weight, 3500 psi compressive strength, vibrated.

3. **Steel Floor and Form Units*** — Noncomposite, 3 in. deep galv units. Min gauges are 20 MSG for fluted and 20/20 MSG for cellular.

Floor may consist of:

(1) All 24 in. wide fluted units.

(2) Alternating one 15 in. wide cellular unit to two or more 24 in. wide fluted units.

Fluted units attached to supports with welds at each side lap and at an intermediate point not over 12 in. OC. Additional welds to be located not over 36 in. OC along each side lap. Cellular units attached to supports with two welds at each end.

CONSOLIDATED SYSTEMS INC — 24 in. wide Type CFD-3. May be phos/ptd.

4. **Welded Wire Fabric** — 6x6 — W1.4xW1.4.

5. **Trench Header** — (Bearing the UL Listing Mark) — Constructed of steel and provided with metal edge screeds. The use of the trench header requires additional thickness of protection material.

6. Header Duct and Fittings — (Bearing the UL Listing Mark) — 1-5/8 in. deep by 6-1/2 in. wide. Housing constructed of steel. The use of the header duct requires additional thickness of protection material.

7. Spray-Applied Fire Resistive Materials* — Applied by spraying with water, in several coats to final untamped thickness as shown above, to steel surfaces which are free of dirt, oil or scale. Use of adhesive or tamping is optional. Min avg untamped density is 12 pcf on ceiling with min ind untamped density of 12 pcf. Min avg untamped density of 17 pcf on beam with min ind untamped density of 15 pcf for Types II or DC/F. Min avg and min ind untamped densities of 22 and 19 pcf, respectively, for Type HP. For method of density determination refer to Design Information Section.

ISOLATEK INTERNATIONAL — Type D-C/F, HP, or Type II, Type EBS or Type X adhesive/sealer is optional.

*Bearing the UL Classification Mark

Reprinted from the Online Certifications Directory with permission from Underwriters Laboratories Inc.

Copyright © 2005 Underwriters Laboratories Inc.®