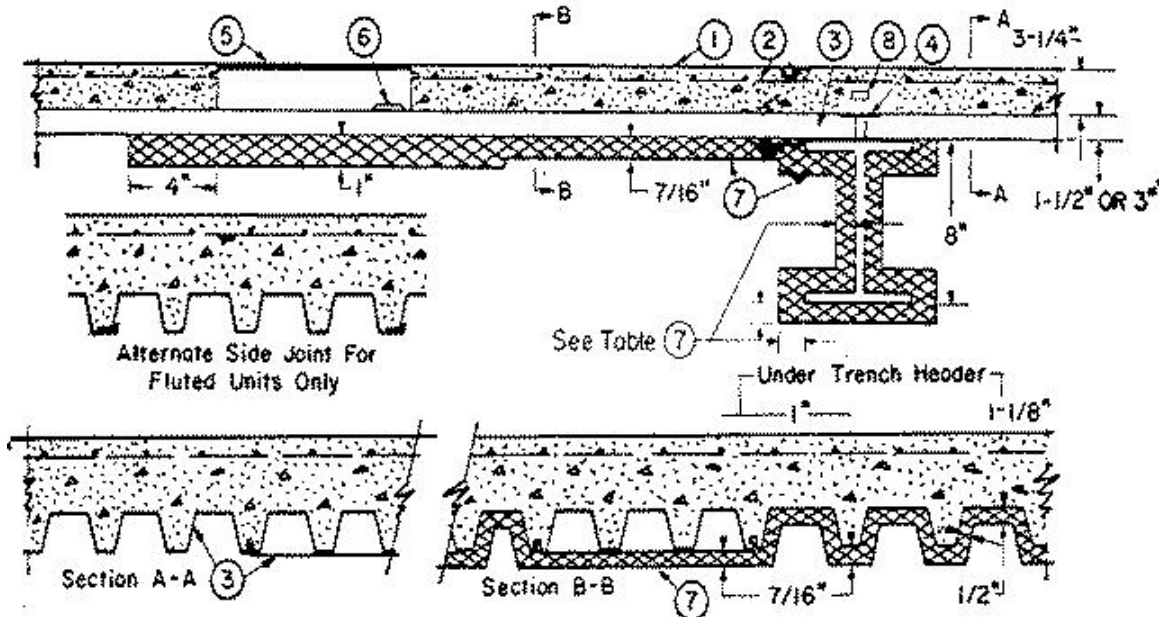


Restrained Assembly Rating — 2 Hr.

Unrestrained Assembly Rating — 0 Hr. (See Item 3)

Unrestrained Beam Ratings — 1, 1-1/2 and 2 Hr.



Beam — W8X20, min size.

1. **Light-Weight Concrete** — Expanded shale, clay, or slate aggregate by rotary-kiln method, or expanded by clay, shale or flyash aggregate by the sintered grate process, 111 +/- 3 pcf unit weight, 3000 psi compressive strength, vibrated, 4 to 7 per cent entrained air.

2. **Welded Wire Fabric** — 6x6 — W1.4xW1.4.

3. **Steel Floor and Form Units*** — Composite 1-1/2, 2, or 3 in. deep galv units. Fluted units may be phosphatized/painted. Min gauges are 20 MSG for fluted and 20/20 MSG for cellular and partial cellular units. The following combinations of units may be used:

- (1) All fluted.
- (2) One cellular or partial cellular to one or more fluted.

CONSOLIDATED SYSTEMS INC — 24 or 36 in. wide Types CFD-2, CFD-3; 24; 30 or 36 in. wide Types CFD-1.5; 24 in. wide NC. Units may be phos/ptd

Spacing of welds attaching units to supports shall be at each edge and not to exceed 16 in. between edges. Unless noted otherwise, adjacent units button-punched or welded together 36 in. OC along side joints. The **Unrestrained Assembly Rating is 1, 1-1/2, or 2 Hr.** dependent on the **Unrestrained Beam Rating**, for 1-1/2 in. deep, 24 in. wide, 18 MSG fluted and 18/20 MSG cellular units with clear spans not more than 8 ft 10 in.

Alternate Construction — Noncomposite units of the same type shown above may be used provided allowable loading is calculated on the basis of noncomposite design.

4. **Joint Cover** — 2 in. wide pressure sensitive tape.

5. **Trench Header** — (Bearing the UL Listing Mark). Housing constructed of steel and provided with metal edge screeds.

6. **Access Openings** — As required, with grommets.

7. **Spray-Applied Fire Resistive Materials*** — Applied by spraying with water in one or more coats to final untamped thickness as shown on the above illustration, to steel surfaces which are free of dirt, loose scale and oil. Adhesive is optional. Tamping is optional. Min avg density of 13 pcf with min ind density of 11 pcf for Types II or DC/F. Min avg and min ind densities of 22 and 19 pcf, respectively, for Type HP. For method of density determination, refer to Design Information Section. When a trench header is not incorporated in the assembly, the Spray-Applied Fire Resistive Materials need only be applied to the steel beam.

Min Thkns In. W8x20	Restrained Assembly Rating Hr	Unrestrained Beam Rating Hr
3/4	2	1
1-1/8	2	1-1/2
1-7/16	2	2

ISOLATEK INTERNATIONAL — Types D-C/F, HP or II, Type EBS or Type X adhesive/sealer optional.

8. **Shear-Connector Studs** — Optional Studs, 3/4 in. diam by 3 in. long, for 1-1/2 in. deep form units to 5 1/4 in. long for 3 in. deep form units, headed type or equivalent per AISC specifications. Welded to the top flange of beam through the steel form units.

9. **Electrical Inserts** — (Not Shown) — Classified as "Outlet Boxes and Fittings Classified for Fire Resistance".

WALKER SYSTEMS INC — When FA300 after set electrical inserts are used, no additional thickness of Spray-Applied Fire Resistive Materials material is required beyond that specified for the general floor area. After set insert may be installed on any 1-1/2, 2 or 3 in. deep cellular floor units specified under Item 3, except 12 in. wide units with cell width exceeding 7-1/4 in. Spacing shall be no more than one insert in each 20 sq ft of floor area in each span with inserts spaced no closer than 24 in. O.C.

WALKER SYSTEMS INC — Type FA300 after set electrical insert with suffix PP-C, P-C or T-C service fittings. Type APA-375-C fittings used for abandonment of insert.

UNITED STEEL DECK INC — For use with 12 or 24 in. wide AWC2 or AWC3 units. Types and fittings as described below. Use of inserts requires spray-applied fire resistive material (Item 7) on cellular units at thicknesses listed below.

(Type 325-M1 and Type 325-M2 Preset Inserts with Activation Fitting Type X).

Installed per accompanying installation instructions over factory punched holes in Type AWC2 or AWC3 floor units. The min thickness of material on the cellular units shall be 7/8 in. The holes cut in the insert cover for passage of wires shall be no more than 1/8 in. larger diam than the wire. For abandonment of insert see installation instructions.

(Type 325 preset insert with Activation Fittings Type I, III, V, VI or VII).

Installed per accompanying installation instructions over factory punched holes in Type AWC2 or AWC3 floor units. The min thickness of Spray-Applied Fire Resistive Materials on cellular units with inserts shall be 1-5/8 in.

(Type 351 — After set Insert)

Installed per accompanying installation instructions in 4-1/4 in. diam hole core-drilled thru concrete topping, centered over top of cell of Type AWC2 or AWC3 cellular floor unit. Spacing of inserts shall be not more than one insert in each 4 sq. ft. of floor area with not less than 2 ft. OC spacing of adjacent inserts. Required Spray-Applied Fire Resistive Materials thickness of 1/2 in. on cellular floor units with inserts.

*Bearing the UL Classification Mark

Reprinted from the Online Certifications Directory with permission from Underwriters Laboratories Inc.

Copyright © 2005 Underwriters Laboratories Inc.®