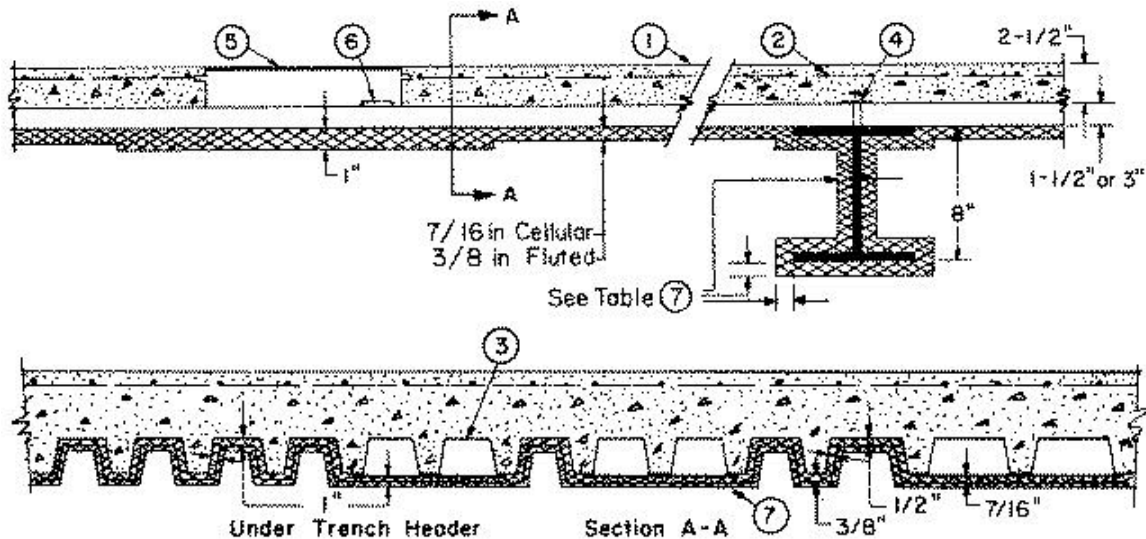


Restrained Assembly Rating — 2 Hr.

Unrestrained Assembly Ratings — 1, 1-1/2 and 2 Hr.

Unrestrained Beam Ratings — 1, 1-1/2 and 2 Hr.



Beam — W8x17, min size.

1. **Normal-Weight or Light-Weight Concrete** — Normal weight concrete, carbonate or siliceous aggregate, 150 +or- 3 pcf unit weight. 3500 psi compressive strength, vibrated. Lightweight concrete, expanded shale or slate aggregate by rotary-kiln method, or expanded clay by rotary kiln or sintered-grate method, 108 +or- 3 pcf unit wt, 3000 psi compressive strength, vibrated, 4 to 7 percent entrained air.

2. **Welded Wire Fabric** — 6x6 — W1.4xW1.4.

3. **Steel Floor and Form Units*** — Composite 1-1/2, 2 or 3 in. deep galv units. Min gauges are 20 MSG for fluted and 20/20 MSG for cellular and partial cellular unless otherwise noted. When normal weight concrete is used, the steel floor units shall be arranged in a blend of one fluted to one cellular unit only. When lightweight concrete is used, the following combinations of units may be used:

- (1) All fluted.
- (2) One cellular or partial cellular to one or more fluted of equal or greater width.
- (3) One cellular to two or more fluted.

CONSOLIDATED SYSTEMS INC — 24 or 36 in. wide Types CFD-1.5, CFD-2 or CFD-3. Units may be phos/ptd.

Spacing of welds attaching units to supports shall be at each side and not to exceed 16 in. OC between sides. Unless specified otherwise for specific unit types, adjacent units button-punched or welded together 36 in. OC along side joints.

Alternate Construction — Noncomposite units of the same type shown above may be used provided allowable loading is calculated on the basis of noncomposite design.

When a superimposed load of 250 PSF is desired the spacing of welds or button-punches shall not exceed 24 in. OC along side joints.

4. **Joint Cover** — 2 in. wide pressure-sensitive tape.

5. **Trench Header** — (Bearing the UL Listing Mark). 12 in. wide housing constructed of steel with metal edge screeds.

6. **Access Openings** — As required, with grommets.

7. **Spray-Applied Fire Resistive Materials** — *Applied by spraying with water in one or more coats to final untamped thicknesses shown on above illustration, to steel surfaces which are free of dirt, loose scale and oil. Adhesive is optional. Tamping is optional. Min avg density of 13 pcf with min individual density of 11 pcf for Type II or DC/F. Min avg and min ind densities of 22 and 19 pcf, respectively, for Type HP. For method of density determination, refer to Design Information Section.

Min Thkns In. (Beam)	Restrained Assembly Rating Hr	Unrestrained Assembly Rating Hr	Unrestrained Beam Rating Hr
3/4	2	1	1
1-1/8	2	1-1/2	1-1/2
1-7/16	2	2	2

ISOLATEK INTERNATIONAL — Type D-C/F, HP or II, Type EBS or Type X adhesive/sealer optional.

8. **Shear-Connector Studs — Optional** — (Not shown) — studs, 3/4 in. diam by 3 in. long, for 1-1/2 in. deep form units to 5-1/4 in. long for 3 in. deep form units, headed type or equivalent per AISC specifications. Welded to the top flange of beam through the steel form units.

*Bearing the UL Classification Mark

Reprinted from the Online Certifications Directory with permission from Underwriters Laboratories Inc.

Copyright © 2005 Underwriters Laboratories Inc.®