

Design No. D816

October 31, 2003

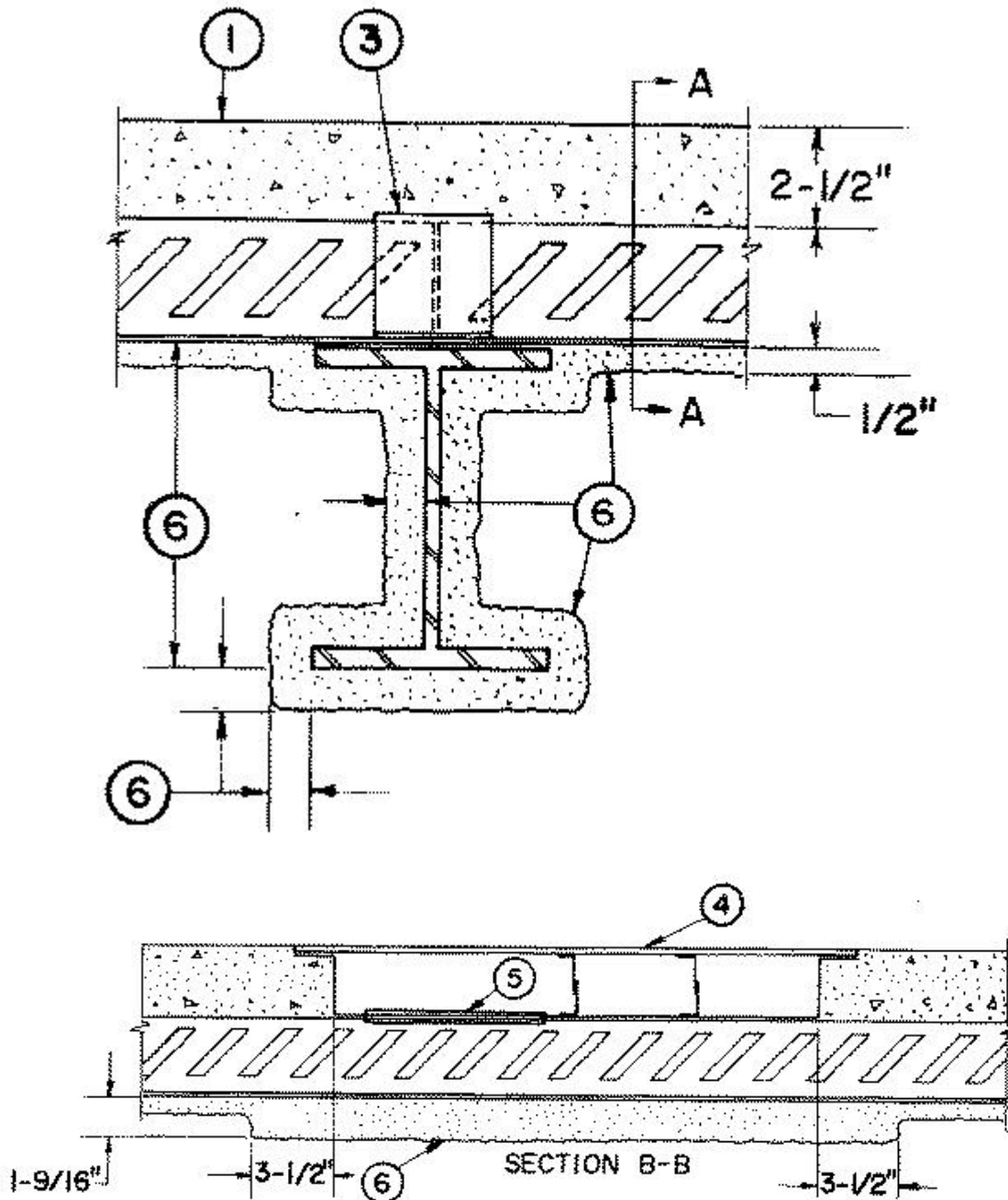
Restrained Assembly Rating — 3 Hr.

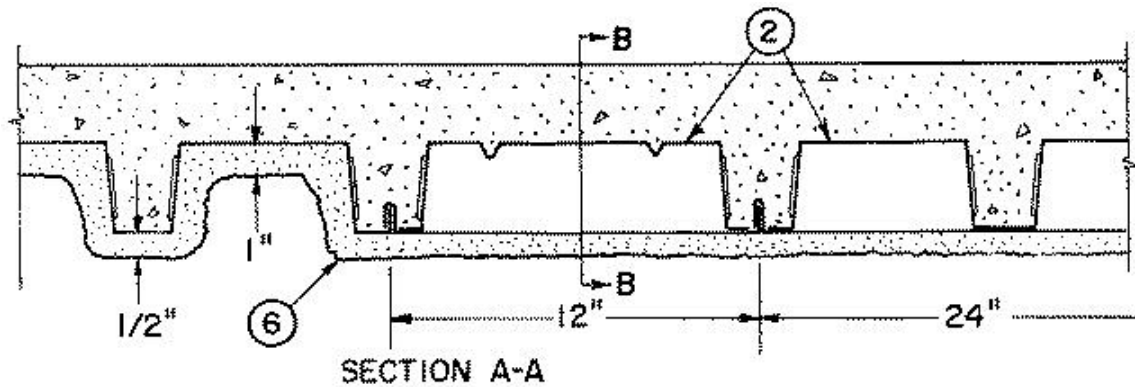
Unrestrained Assembly Ratings — 1-1/2 and 2 Hr.

(See Item 1)

Unrestrained Beam Ratings — 1-1/2 and 2 Hr.

(See Item 1)





Beam — W10x17 or W10x25 min sizes — (See Item 6).

1. Normal-Weight or Lightweight Concrete — Normal weight concrete, siliceous or carbonate aggregate 150 +or- 3 pcf unit weight, 3000 psi compressive strength, vibrated. When normal weight concrete is used, the Unrestrained Beam and Unrestrained Assembly Ratings are 2 hrs. Lightweight concrete, expanded shale, clay or slate aggregate by rotary kiln method; 110 +or- 3 pcf unit weight, 3000 psi compressive strength, vibrated. When lightweight concrete is used, the Unrestrained Beam and Unrestrained Assembly Ratings are 1-1/2 hrs.

2. Steel Floor and Form Units* — Composite 1-1/2, 2, or 3 in. deep galv units (1) all 24 or 36 in. wide, or other width specified below, 20 MSG min fluted units, (2) alternating one or more of the above fluted units to one 20/20 MSG min cellular unit of equal or lesser width, (3) one or two 12 in. wide 20/20 MSG min cellular units may be blended with one or more 24 in. or wider fluted units. Units welded to supports not over 12 in. OC. Unless noted otherwise, side joints of adjacent units button-punched or welded together 36 in. OC.

CONSOLIDATED SYSTEMS INC — 24 or 36 in. wide Types CFD-1.5, CFD-2 or CFD-3. Units may be phos/ptd.

Alternate Construction — Noncomposite units of the same type listed above may be used provided allowable loading is calculated on the basis of noncomposite design.

3. Joint Covers — No. 16 MSG galv steel, nom 4 in. wide, welded to each 24 in. wide cellular—steel floor unit at two locations.

4. Trench Header — (Bearing the UL Listing Mark). Constructed of steel and provided with metal edge screeds.

5. Access Openings — As required, with grommets.

6. Spray-Applied Fire Resistant Materials* — Applied by spraying with water in one or more coats, to thicknesses shown above. Min thickness below trench header in crests of fluted units is 2-1/4 in. Adhesive is optional. Tamping is optional. For Type D-C/F or II min avg density is 13 pcf with min ind density of 11 pcf. Min avg and min ind densities of 22 and 19 pcf, respectively, for Type HP. For method of density determination refer to the Design Information Section.

ISOLATEK INTERNATIONAL — Type D-C/F, HP or II, Type EBS or Type X adhesive/sealer optional.

Material thickness on beam as follows:

Beam Size	Thkns In.
W10(x)17	1-5/16
W10(x)25	1

*Bearing the UL Classification Mark

Reprinted from the Online Certifications Directory with permission from Underwriters Laboratories Inc.

Copyright © 2005 Underwriters Laboratories Inc.®