

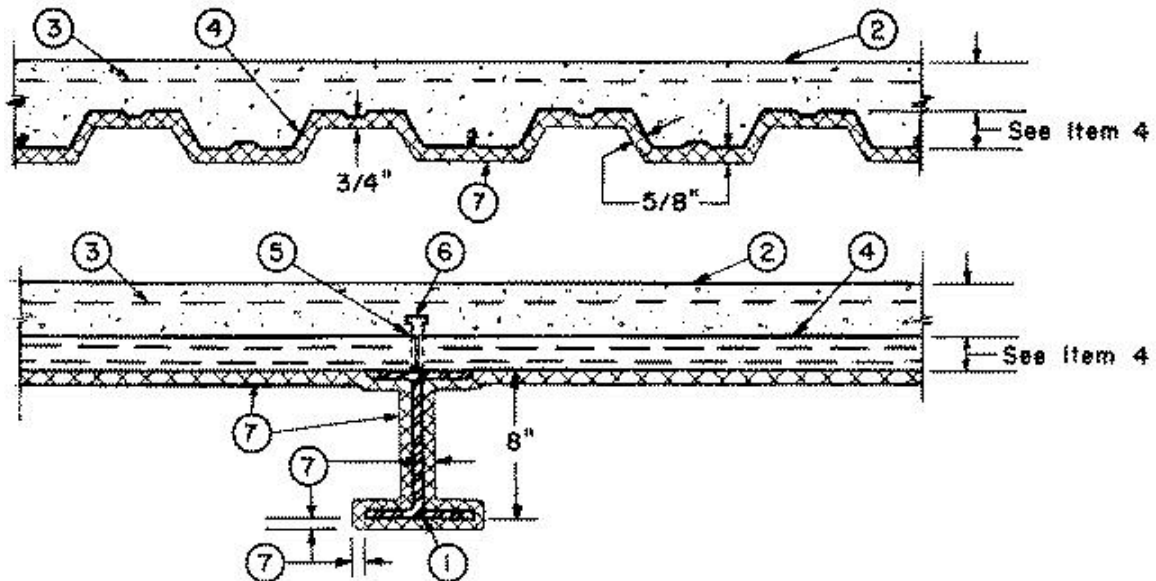
Design No. D742

June 14, 2002

Restrained Assembly Ratings — 2 and 3 Hr. (See Item 2)

Unrestrained Assembly Rating — 1/2 Hr.

Unrestrained Beam Ratings — 1 and 1-1/2 Hr.



1. **Beam** — W8x24 min size.

2. **Normal-Weight Concrete** — Carbonate aggregate, 150 +/- 3 pcf unit weight, 3500 psi compressive strength, vibrated.

Min Concrete Topping Thkns In.	Restrained Assembly Rating Hr
2-1/2	2
3-1/2	3

3. **Welded Wire Fabric** — 6x6 — W1.4xW1.4.

4. **Steel Floor and Form Units*** — Composite 1-1/2, 2 or 3 in. deep, 24 in. wide, galv, all fluted units. Min gauge is 22 MSG. Spacing of welds attaching units to supports shall be at each side of joint and not to exceed 12 in. OC between joints. Adjacent units welded together 36 in. OC at side joints. When a superimposed load of 250 PSF is desired the spacing of welds or button-punches shall not exceed 24 in. OC along side joints.

CONSOLIDATED SYSTEMS INC — 24 or 36 in. wide Types CFD-1.5, CFD-2, or CFD-3. Units may be phos/ptd.

Alternate Construction — Noncomposite units of the same type listed above may be used provided allowable loading is calculated on the basis of noncomposite design. Fluted composite units may have integral hanger tabs punched in valleys of units spaced 12 in. OC and staggered in adjacent rows.

5. **Joint Cover** — 2 in. wide, pressure-sensitive cloth tape.

6. **Shear Connector** — (Optional) — Studs, 3/4 in. diam by 3-3/8 in. long., headed type or equivalent per AISC specification. Welded to the top flange of beam through the deck.

7. **Spray-Applied Fire Resistive Materials** — *Applied by mixing with water and spraying in one coat to a final thickness as shown above to steel surfaces which must be clean and free of dirt, loose scale and oil. Min avg and min ind density of 15/14 pcf respectively. For method of density determination, refer to Design Information Section.

Min Thkns In. (Beam)	Restrained Assembly Rating Hr	Unrestrained Beam Rating Hr
1/2	2	1
3/4	3	1-1/2

ARABIAN VERMICULITE INDUSTRIES — Type MK-5.

GRACE CANADA INC — Types MK-4, MK-5.

W R GRACE & CO - CONN CONSTRUCTION PRODUCTS DIV — Type MK-4, MK-5, MK-6/HY, MK-6s, RG, Monokote Acoustic 1.

GRACE KOREA INC — Types MK-6/CBF, MK-6/ED, MK-6/HY, MK-6s, Monokote Acoustic 1.

PYROK INC — Type LD.

SOUTHWEST VERMICULITE CO — Types 4, 5, 5EF, 5GP, 5MD, 8EF, 8GP, 8MD, 9EF, 9GP, 9MD.

VERMICULITE PRODUCTS INC — Types MK-4, MK-5, VP4, VP5.

*Bearing the UL Classification Mark

Reprinted from the Online Certifications Directory with permission from Underwriters Laboratories Inc.

Copyright © 2005 Underwriters Laboratories Inc.®